

Iowa Assessment Program



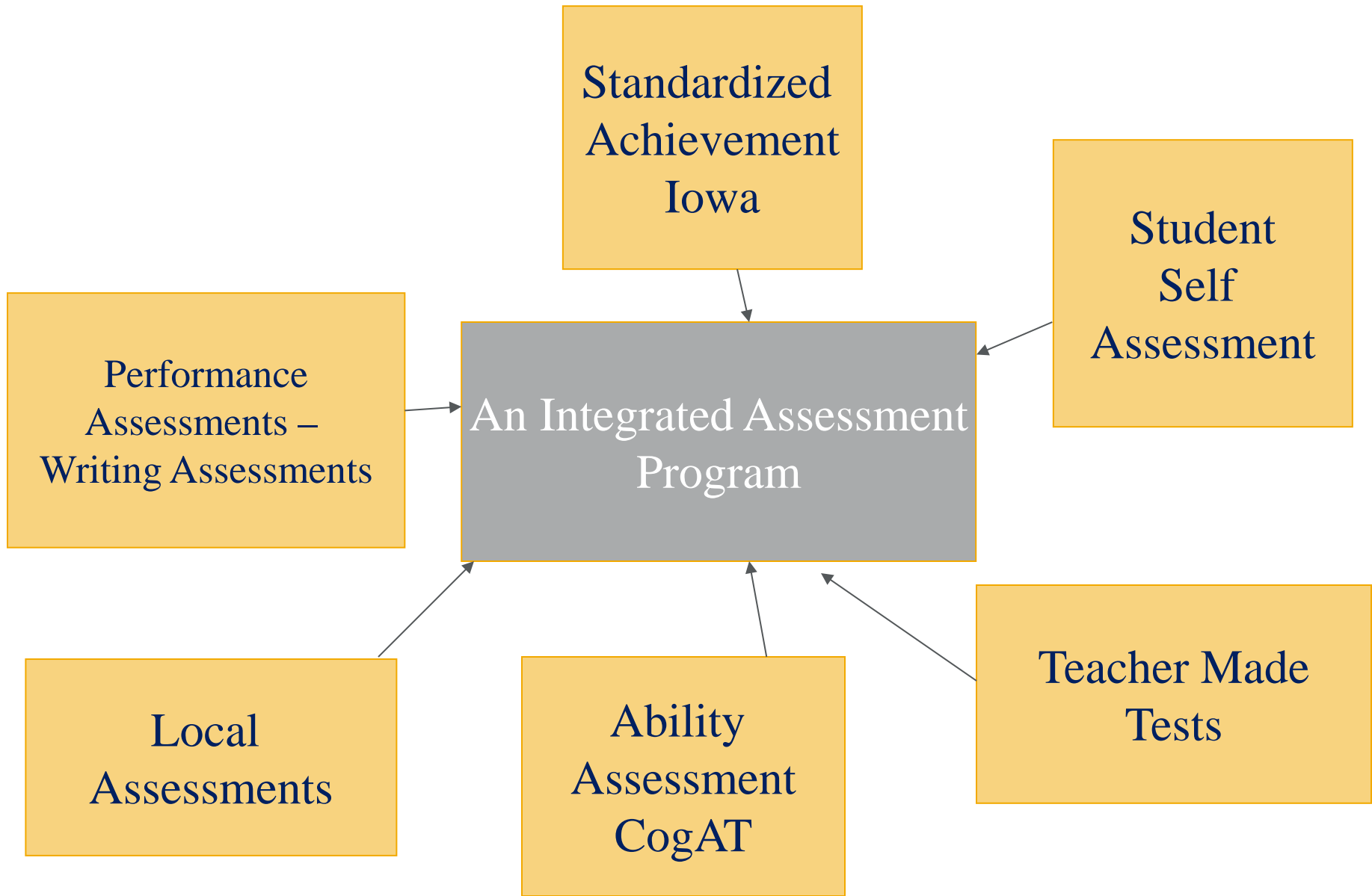
WHAT IS A STANDARDIZED TEST?

It is **not** a mastery test. It is designed to find out how much a student knows and compares your child's performance to his/her peers in the same grade across the county.

One Piece of Evidence of Learning

Information obtained from the Iowa Test and the Cognitive Abilities Test should be used with other information about your child.





Appropriate Purposes for Testing

- Identify strengths and weaknesses of individual students
- Identify strengths and weaknesses of groups of students
- Monitor year to year developmental changes
- Provide feedback to students and parents



What is a Norm?

- Compares student performance to a representative sample of the population in the same grade and at the same time of the year
- An indicator of strengths and weaknesses in specific achievement areas.



How Tall is Waldo?



1 5 10 20 30 40 50 60 70 80 90 95 99



How Heavy is Waldo?



1 5 10 20 30 40 50 60 70 80 90 95 99

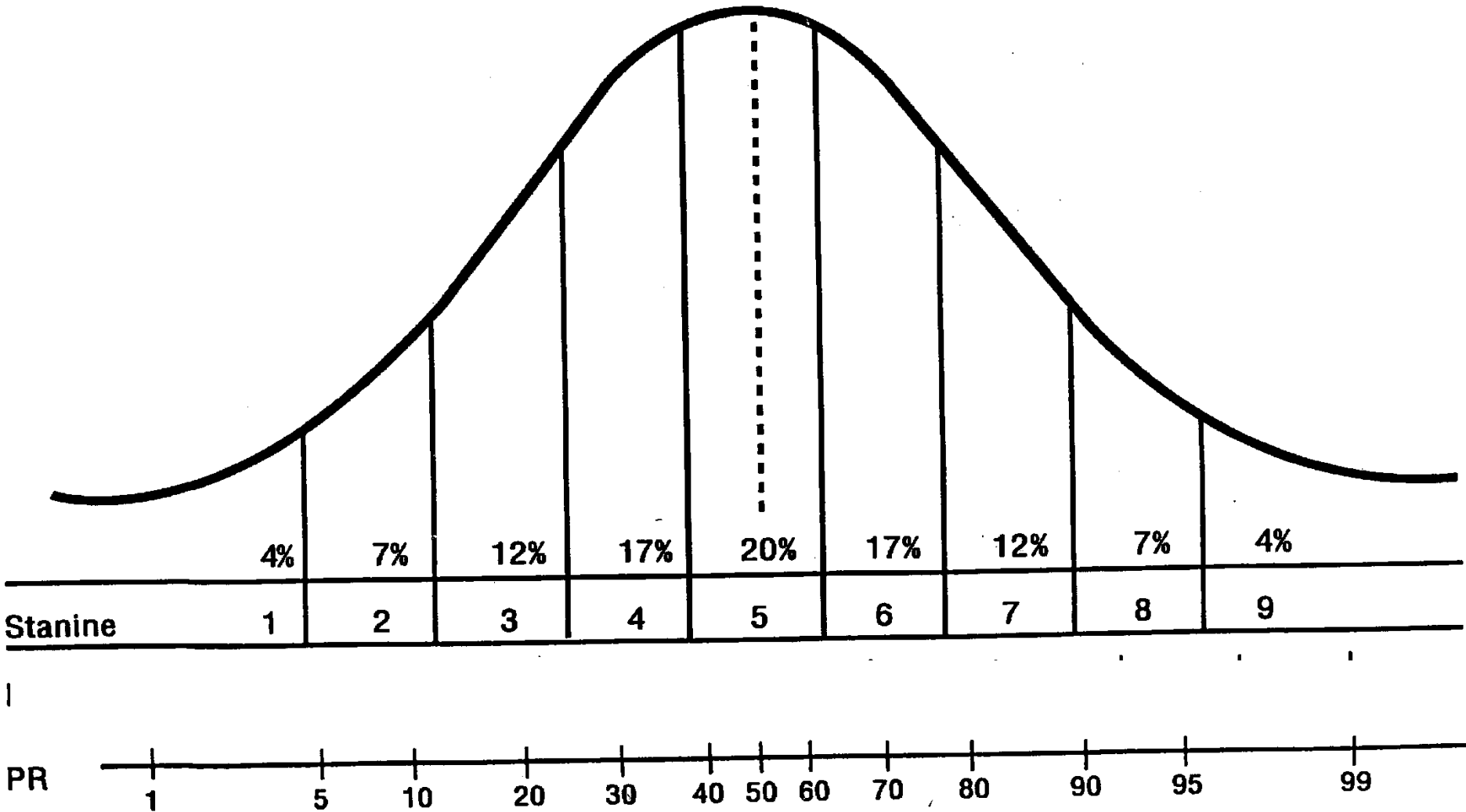


Is Waldo Taller or Heavier?

Attribute	Percentile
Height	90
Weight	20



Relationship of Stanines, PRs, and PRs



What is the Diocesan Testing Program?

- Grades 3 - 8 administers The Iowa Assessments
- Grades 4 and 6 also administers the Cognitive Abilities Test



What Do I Need to Know about The Iowa Assessment



The Iowa Assessment Standards Reflect the Latest National Standards in:

English Language Arts
Mathematics
Social Studies
Science



Important Information for Students to know

- To be average a student needs to only correctly answer approximately 50% of the items. The other items are designed to see how far beyond his/her grade level a child might achieve.
- Items do not go from easy to hard – Item difficulty is mixed.



Reports to Parents

You receive information about your child's performance
in several areas:

ELA (English Language Arts)
Mathematics
Social Studies
Science

English Language Arts (ELA) Assesses:

- Reading
- Written Expression
- Conventions of Writing
- Vocabulary



Reading

Students read several informational and literature based selections silently and answer questions.

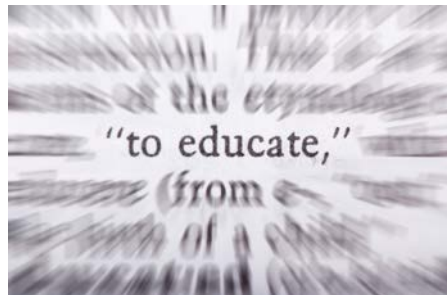


Vocabulary

A pure measure of word knowledge

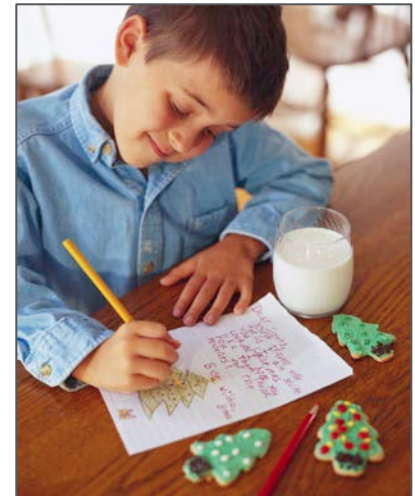
- Test of word knowledge
- Not a reading test – as no context is provided to give meaning
- Best predictor of achievement

25 To operate the machine
A oil
B run
C build
D repair



Written Expression

- Assesses the Editing and Proof-reading Strategies of the Writing Process
 - Select a better ending sentence
 - Revise a sentence



Conventions of Writing

- Students must proof-read a sentence or paragraph and select the correct convention of writing for a given sentence.
 - Punctuation - which line in a short paragraph has an error in punctuation
 - Spelling – which word is misspelled in a list of 4 words
 - Capitalization – line in a short paragraph has an error in capitalization

Math

Assess student's knowledge of:

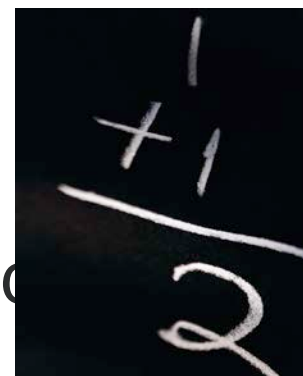
- Geometry
- Measurement
- Fractions/ decimals
- Data interpretation
- Algebraic expressions
- Problem Solving



Math

- **Computation**

- Pure assessment of the ability to add, multiply, subtract and divide using whole and rational numbers
- Items are intentionally not embedded in word problems
- Speed and accuracy in computing
- Students must have a strong working knowledge of their addition, subtraction and multiplication facts.



Social Studies

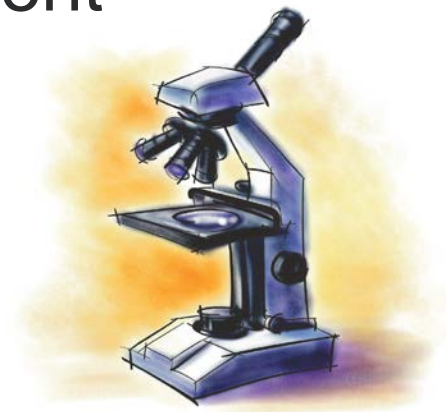
- Use of Primary Source Material
- Addresses concepts in:
 - Economics
 - History
 - Geography
 - Multicultural Society
 - Government



Science

- **Process and Content**

- Increase emphasis on analysis of experiments, lab methodology, theories, and concepts
- Balance of items across science content areas: Life, Physical, Earth, Health, Environment



Cognitive Abilities Test™

CogAT® is key to understanding
how your students learn!



Powerful Tool Alone or With the Iowa Tests

CogAT...

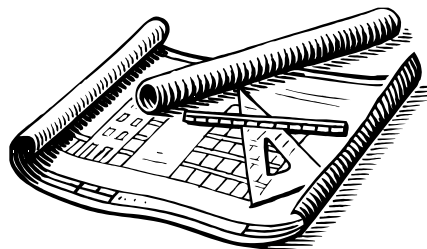
- Provides extensive information on how to use students' scores in ways that help students learn

CogAT with The Iowa Tests...

- Provides predictive achievement scores

CogAT Measures Important Reasoning Skills:

- Making inferences
- Detecting similarities and differences
- Comprehending problem situations
- Forming concepts
- Classifying and categorizing objects, events, and other stimuli
- Creating and adapting problem-solving strategies
- Using past experience and instruction in novel problem contexts



Abilities:

- **Verbal Ability** – Best predictor of academic success
- **Quantitative Ability** – “number sense” ability to see relationship of numbers
- **Nonverbal Ability** – Best predictor of how fast a student learns

Cognitive Profiles

- **A Profile**= All Abilities roughly at sAme level
- **B Profile** = One of the Abilities is aBove or BBelow the other **B(N-)** or **B(V+)**

Cognitive Profiles

- **C Profile = Contrast** A student shows a relative strength and a relative weakness. **C(V+ Q-)**
- **E Profile = Extreme** difference between abilities

Explanation for Parents and Teachers

www.cogat.com

Click on interactive report and enter
student profile

PRODUCT LINKS

- ▶ [Product Home](#)
- ▶ [Product Details](#)
- ▶ [Pricing](#)
- ▶ [Scoring](#)
- ▶ [Support](#)

Related Products

CogAT[®]

Click here to find out about the all-new CogAT Form 7!

 Iowa Assessments[™]

Click here to find out about Iowa Assessments[™] Form E!

Cognitive Abilities Test[™] (CogAT[™]) Form 6 and Form 7



Interactive Ability Profile Interpretation System

This site was built to enable teachers, counselors, and parents to interpret the Cognitive Abilities Test[™] (CogAT) Ability Score Profiles for their students. [Click here to see A Note to Parents](#)

Directions:

Enter a student's ability profile in the appropriate drop down boxes (see sample score for clarification). Once complete, click search, and an interpretation of the score will be provided.

Sample Score Profile	Input Your Score Profile
Profile ↓ Stanine → 7C (V+ Q-) ← Relative Weakness ↑ Relative Strength	Stanine: <input type="text" value="1"/> ▾ Profile: <input type="text" value="A"/> ▾ Relative Strength: <input type="text" value="None"/> ▾ Relative Weakness: <input type="text" value="None"/> ▾
	<input type="button" value="Search"/>

Verbal

17 clothes → wrinkle : lips →
A smile B pucker C yawn D speak E bite

18 people → dine : cows →
J chew K hay L graze M nibble N milk

Quantitative

10.

7 8 9 8 9 →

J 8

K 9

L 10

M 11

N 12

11.

1 3 1 1 3 1 →

A 1

B 0

C 2

D 3

E 4

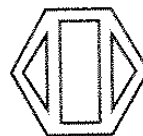
Non-Verbal



J



K



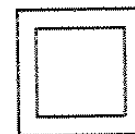
L



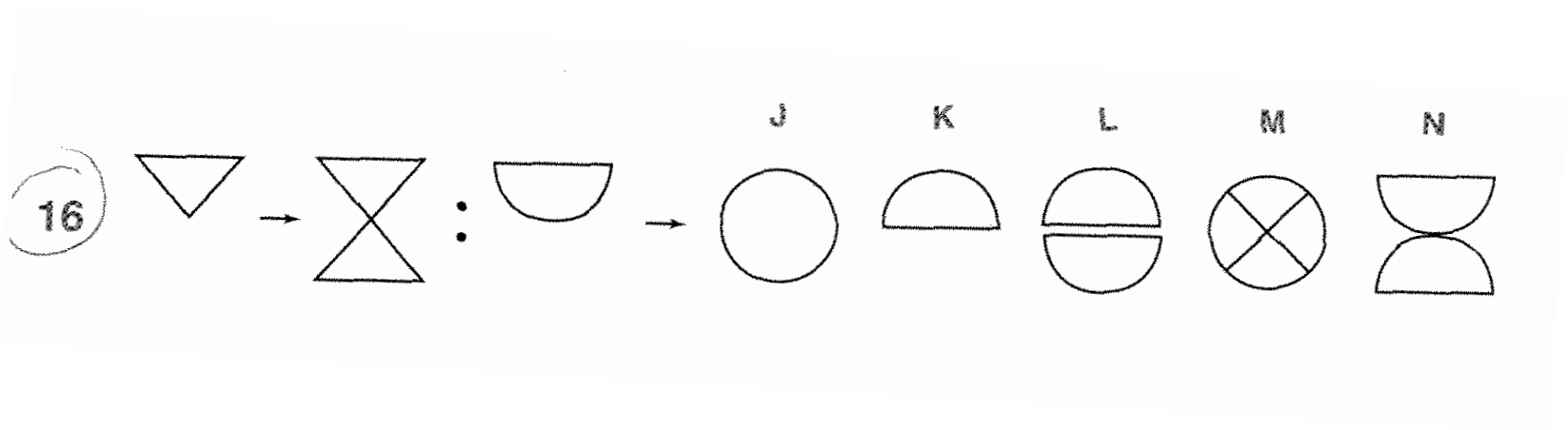
M



N



Non-Verbal



Non-Verbal

4

J K L M N